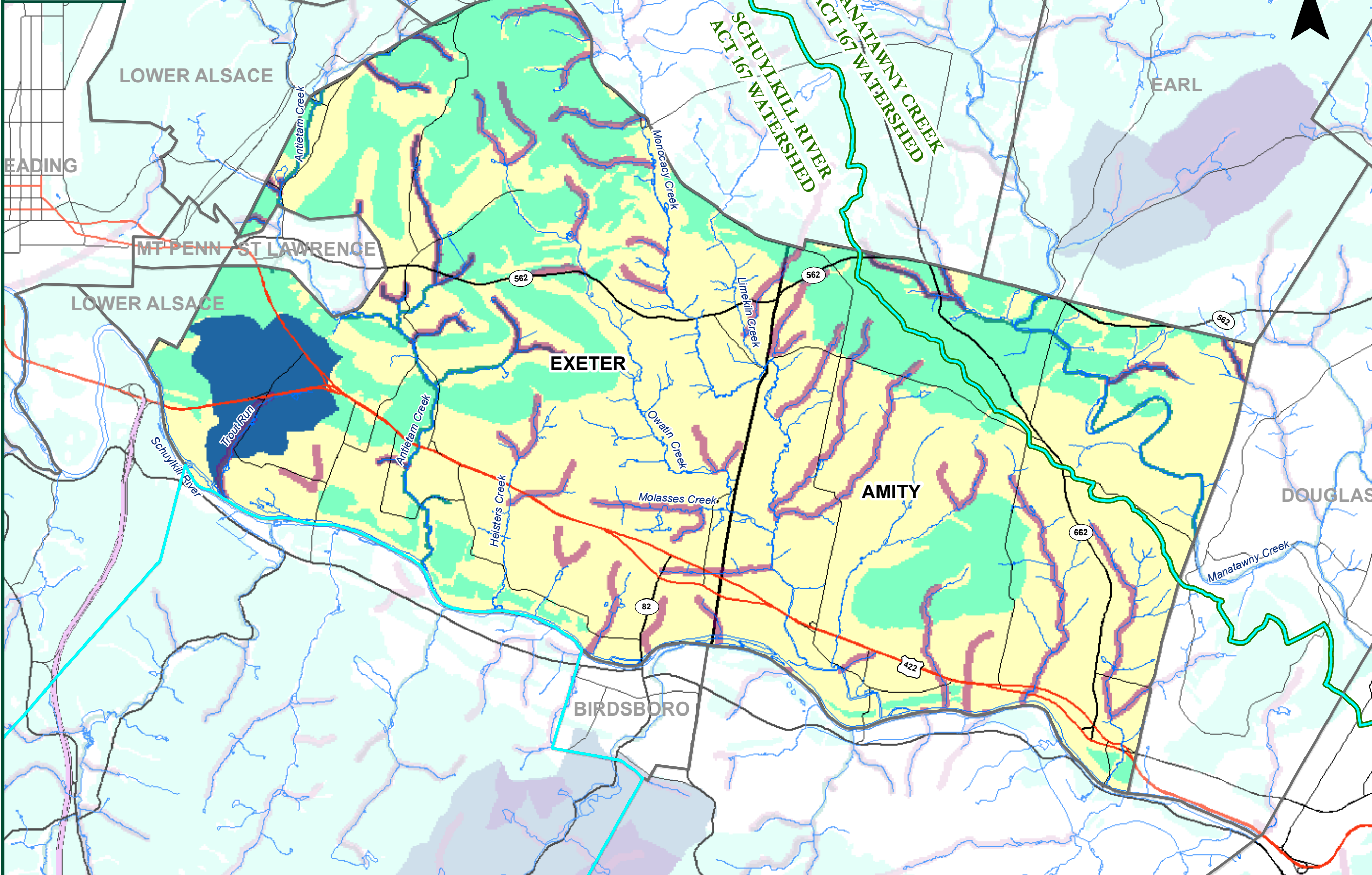


Nonpoint Education for Municipal Officials (NEMO)

Water Resource Priorities



- Legend**
- MAJOR WATERSHED BOUNDARIES
 - MUNICIPAL BOUNDARIES
 - STREAMS
- MAJOR ROADS**
- INTERSTATES
 - US HIGHWAYS
 - PA HIGHWAYS
 - OTHER STATE ROADS
- WATER RESOURCES**
- HEADWATERS
 - RESERVOIR WATERSHEDS
 - COLD WATER FISHERIES
 - EXCEPTIONAL VALUES STREAMS
 - GROUNDWATER RECHARGE AREAS

Water resources data were generated by the Philadelphia Water Department as part of a source water protection plan for the Schuylkill River Watershed.

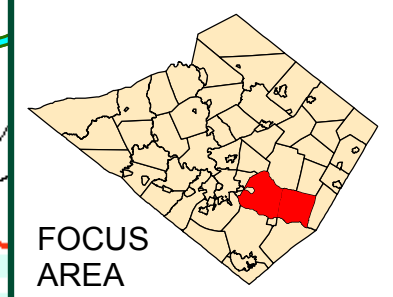
Headwaters-Headwater streams are order 1 stream segments with a 200 foot buffer, isolated from the USGS NHD data set.

Reservoir Watersheds-Reservoir watershed boundaries were manually delineated using USGS topography data.

Exceptional Value Streams-The PA Department of Environmental Protection has designated exceptional value streams throughout the state.

Cold Water Fisheries-All PA Department of Environmental Protection designated cold water fisheries are included with a 100 foot buffer.

Data Sources:
 Municipal Boundaries - PADOT
 Watershed Boundaries - PADEP
 Streams - Berk Co. Planning Commission
 Roads - PADOT
 Water Resources Data - Philadelphia Water Department



FILE: \\GISserver\GIS\Projects\2532-NEMO\Map\NEMO_2532.mxd