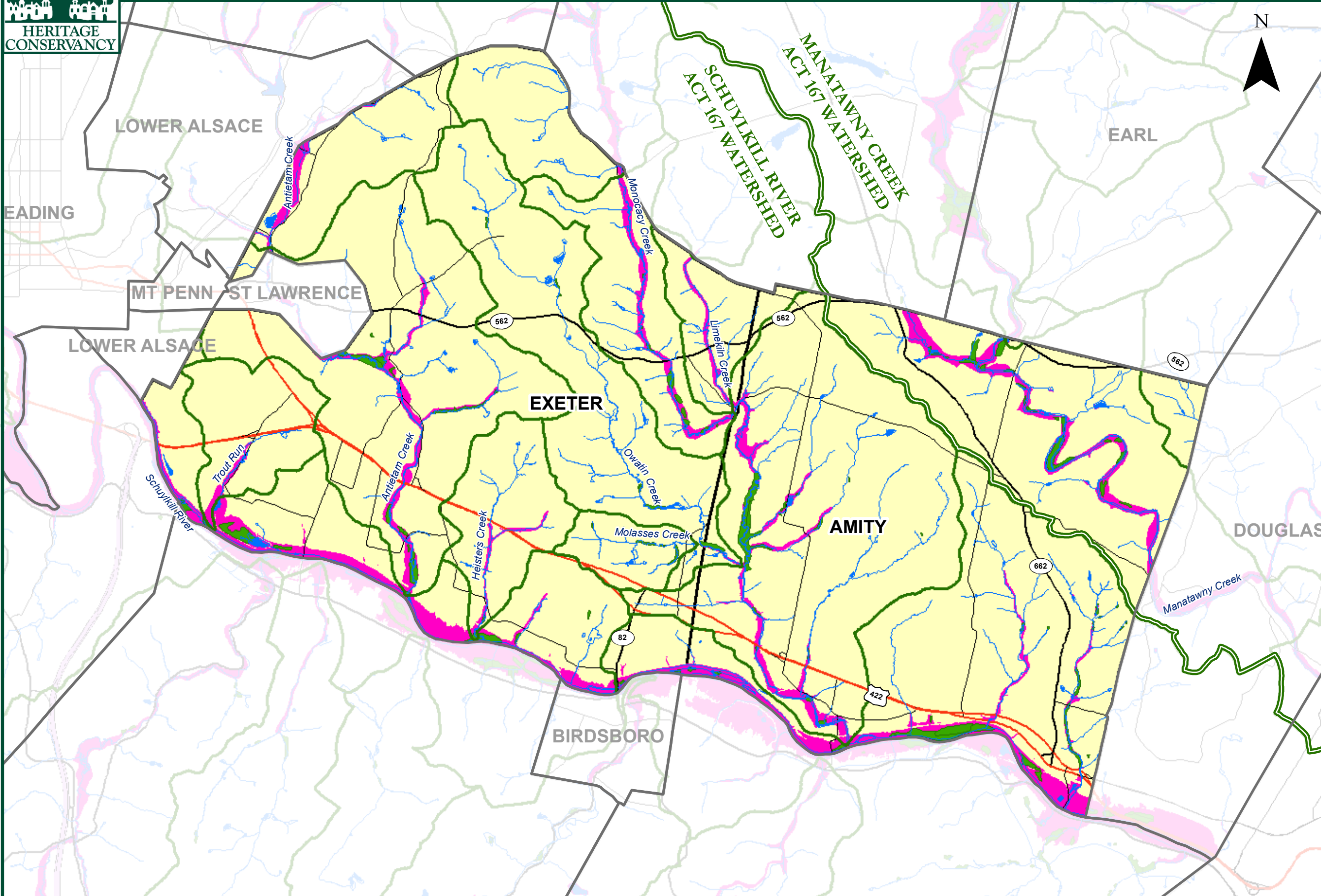




# Nonpoint Education for Municipal Officials (NEMO)

## Wetlands and Floodplains



- Legend**
- MAJOR WATERSHED BOUNDARIES
  - SUBWATERSHEDS
  - NWI WETLANDS
  - SURFACE WATER BODIES
  - MUNICIPAL BOUNDARIES
  - STREAMS
- MAJOR ROADS**
- INTERSTATES
  - US HIGHWAYS
  - PA HIGHWAYS
  - OTHER STATE ROADS

"NWI data are digitized from wetland maps developed by the U.S. Fish and Wildlife Service. In NWI maps, wetlands are classified according to the Cowardin Classification system, which is a federal standard for wetland mapping. NWI maps are compiled from photointerpreted aerial photography from the National Aerial Photography Program (NAPP) 1:40,000 Scale, and the National High Altitude Photography Program (NHAP) 1:58,000 or 1:80,000 Scale. Sources dates range from the 1970's to the present. The minimum mapping unit for treeless areas is 1/4 acres, 1 to 3 acres in general."

**Data Sources:**  
 Municipal Boundaries - PADOT  
 Watershed Boundaries - PADEP  
 Streams - Berk Co. Planning Commission  
 Roads - PADOT  
 Wetlands - USFWS  
 Water Bodies - Derived from Wetlands Data  
 Floodplains - Bers County Planning Commission

