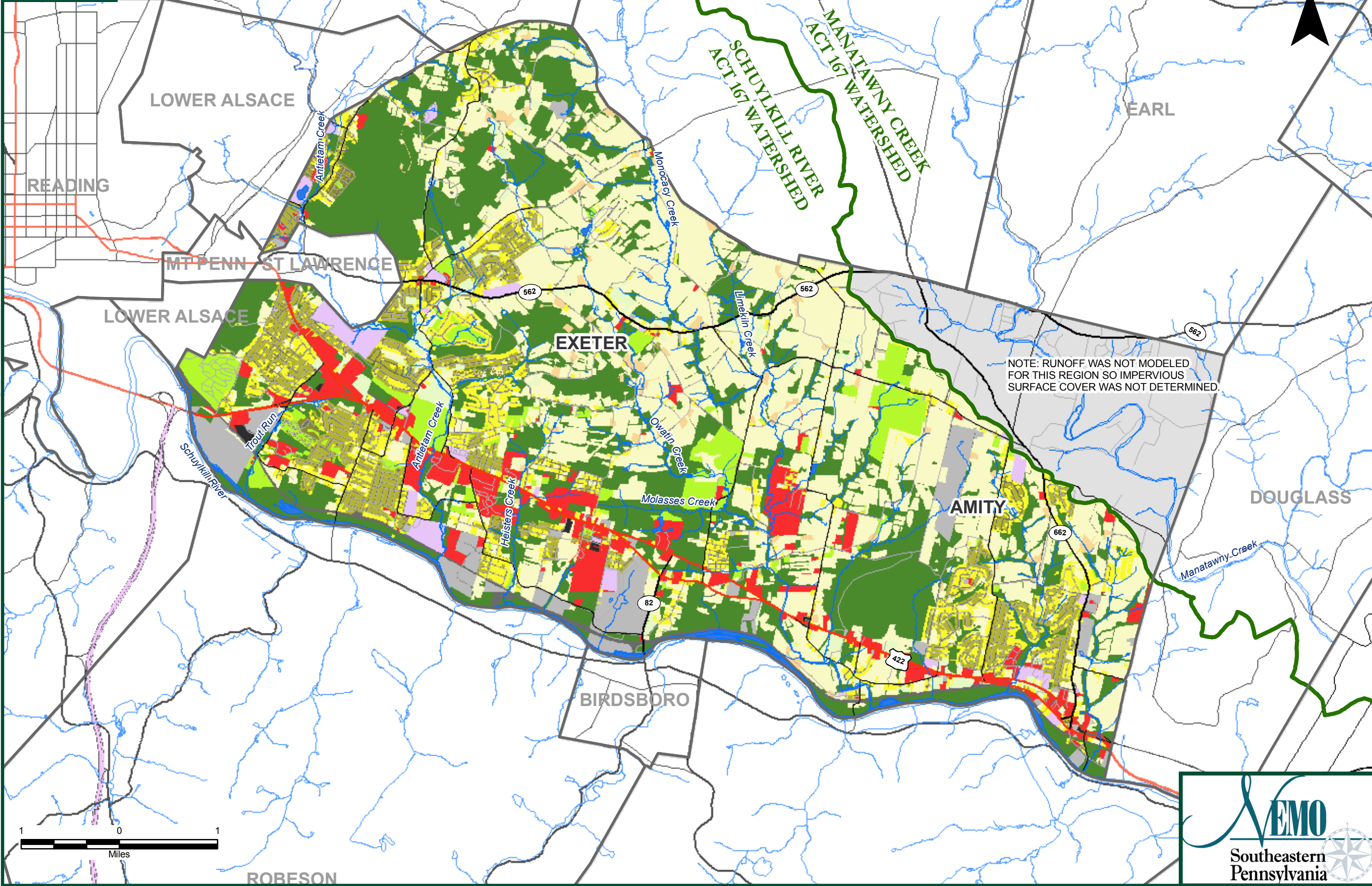


Nonpoint Education for Municipal Officials (NEMO)

Land Cover Generated for Runoff Modeling



Legend

- MAJOR WATERSHED
- MUNICIPAL BOUNDARIES
- STREAMS
- MAJOR ROADS
- INTERSTATES
- US HIGHWAYS
- PA HIGHWAYS
- OTHER STATE ROADS
- LOCAL ROADS
- (NO DATA)

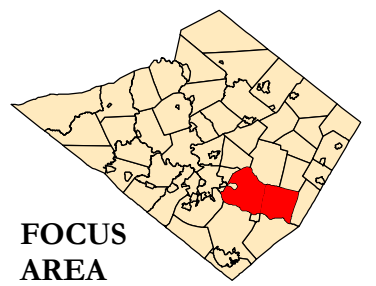
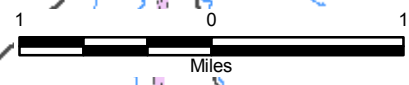
LAND COVER

- AGRICULTURAL
- FOREST
- MEADOW
- FARMSTEAD
- OPEN SPACE
- INSTITUTIONAL
- COMMERCIAL
- INDUSTRIAL
- MINING
- PAVED
- RESIDENTIAL (1-4 ACRES/ DWELLING)
- RESIDENTIAL (1/3-1 ACRE/ DWELLING)
- RESIDENTIAL (1/8-1/3 ACRE/ DWELLING)
- RESIDENTIAL (LT 1/8 ACRE/ DWELLING)
- RIGHT OF WAY
- WATER

LAND COVER DATA DERIVED FROM SCHUYLKILL RIVER WATERSHED ACT 167 PLAN LAND COVER DATA - MANATAWNY CREEK WATERSHED IS NOT PART OF THIS ACT 167 PLAN SO LAND COVER DATA ARE NOT AVAILABLE FOR THE NORTHEAST PORTION OF AMITY

NOTE: RUNOFF WAS NOT MODELED FOR THIS REGION SO IMPERVIOUS SURFACE COVER WAS NOT DETERMINED.

Data Sources:
 Municipal Boundaries - PADOT
 Watershed Boundaries - PADEP
 Streams - Berk Co. Planning Commission
 Roads - PADOT
 Impervious Cover - Berks Co. Planning Commission



FILE: \\GIServer2\GIS\Projects\2532-NEMO\Map\NEMO_2532.mxd