

# Nonpoint Education for Municipal Officials (NEMO)



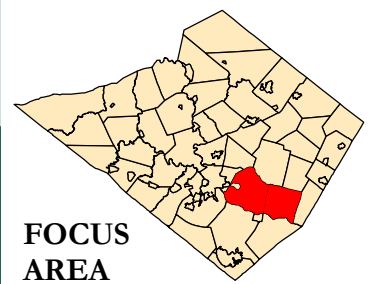
## Percent Impervious Surfaces

Based on Landcover Data from Act 167 Plan

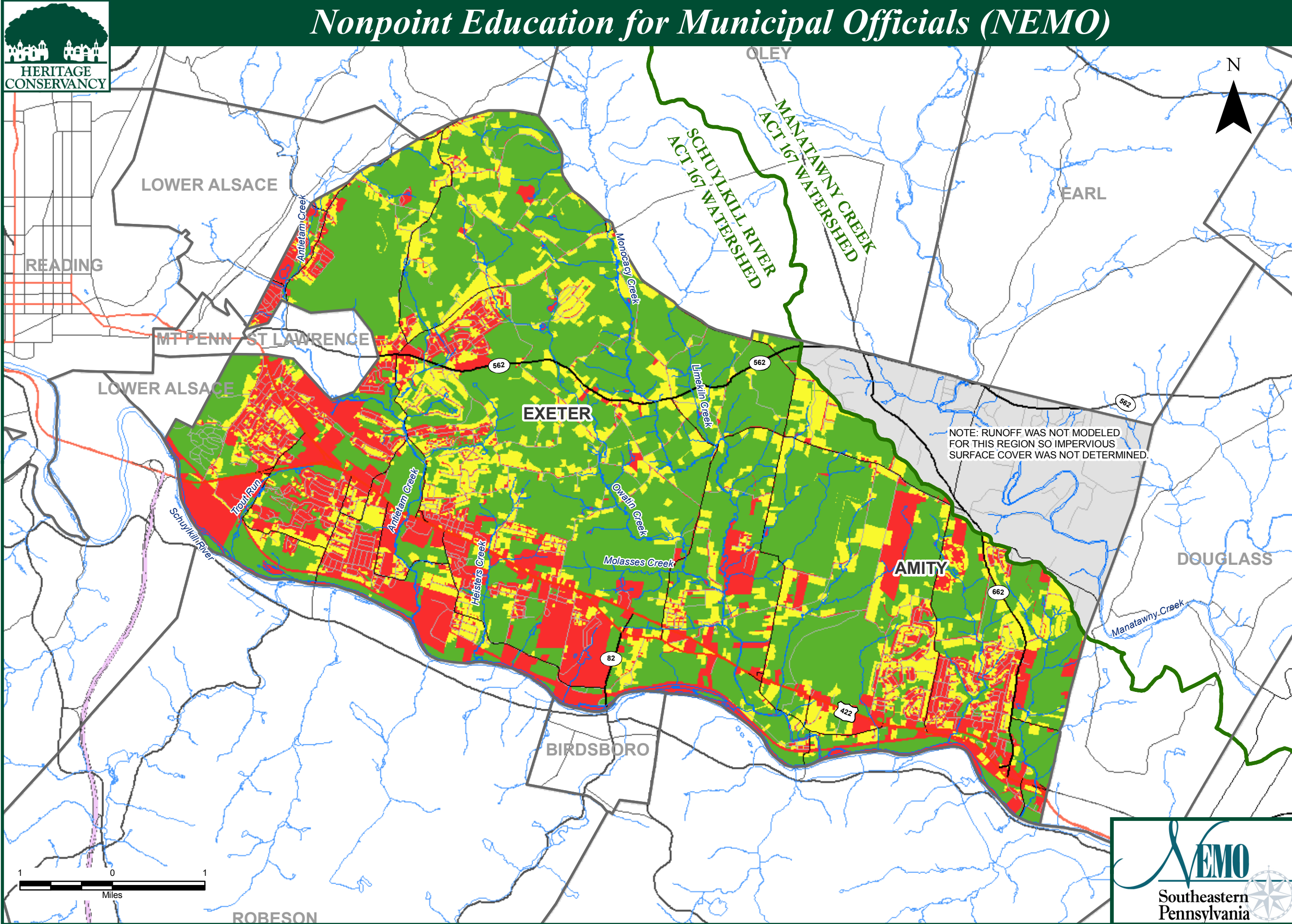
- Legend**
- MAJOR WATERSHED
  - MUNICIPAL BOUNDARIES
  - STREAMS
  - MAJOR ROADS
  - INTERSTATES
  - US HIGHWAYS
  - PA HIGHWAYS
  - OTHER STATE ROADS
  - LOCAL ROADS
  - IMPERVIOUS COVER**
  - 0-10%
  - 10-25%
  - 25-100%
  - (NO DATA)

IMPERVIOUS COVER DERIVED FROM SCHUYLKILL RIVER WATERSHED ACT 167 PLAN LANDCOVER DATA - MANATAWNY CREEK WATERSHED IS NOT PART OF THIS ACT 167 PLAN SO IMPERVIOUS COVER DATA ARE NOT AVAILABLE FOR THE NORTHEAST PORTION OF AMITY

Data Sources:  
 Municipal Boundaries - PADOT  
 Watershed Boundaries - PADEP  
 Streams - Berk Co. Planning Commission  
 Roads - PADOT  
 Impervious Cover - Berks Co. Planning Commission



FOCUS AREA



NOTE: RUNOFF WAS NOT MODELED FOR THIS REGION SO IMPERVIOUS SURFACE COVER WAS NOT DETERMINED.