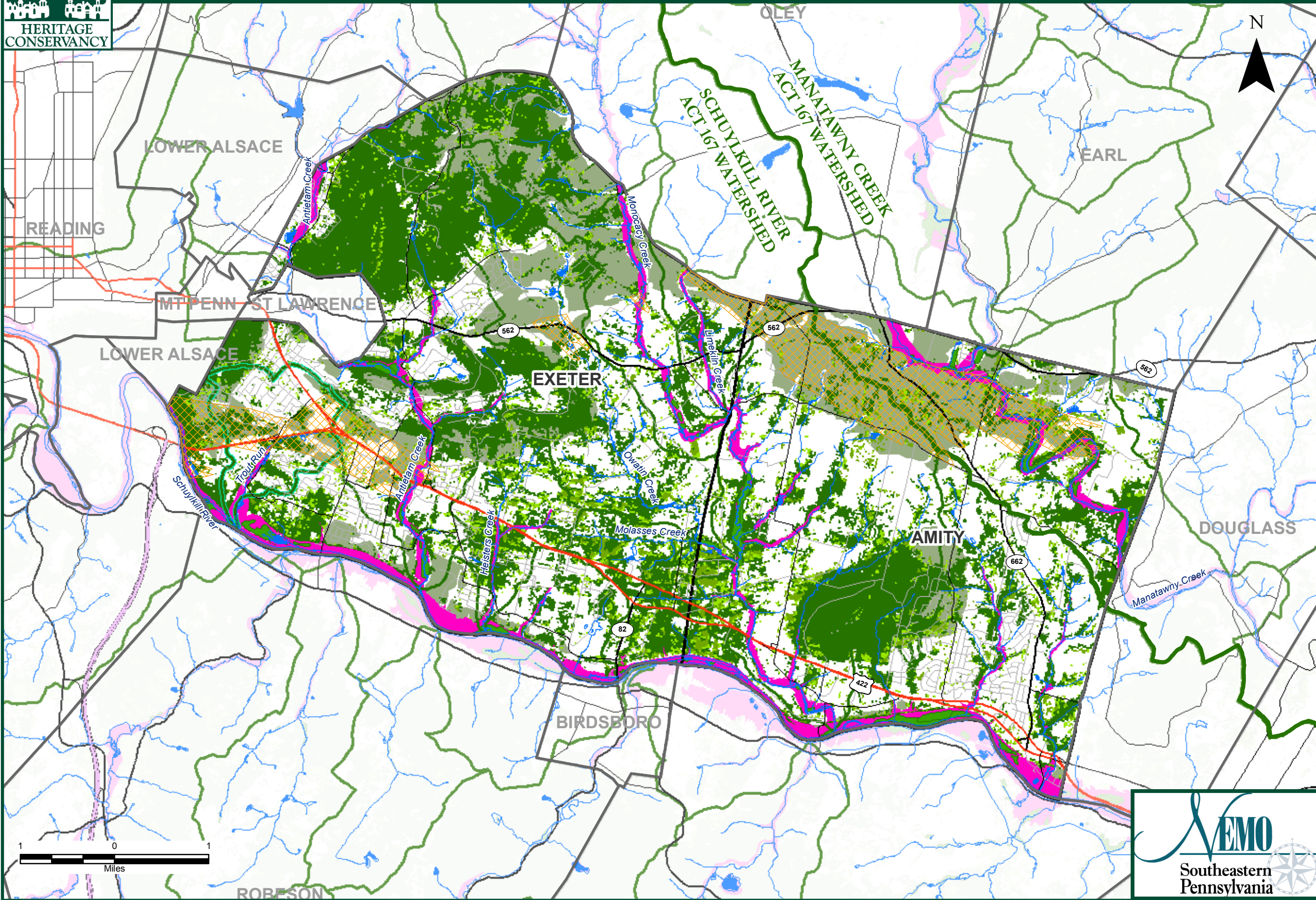


# Nonpoint Education for Municipal Officials (NEMO)



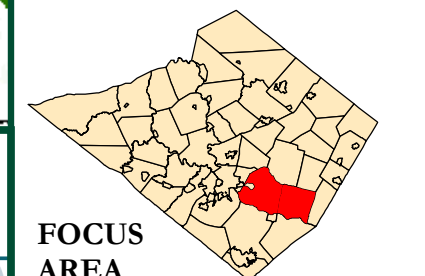
HERITAGE CONSERVANCY



## Preservation Priorities

- Legend**
- MAJOR WATERSHED
  - MUNICIPAL BOUNDARIES
  - SURFACE WATER BODIES
  - STREAMS
  - MAJOR ROADS**
  - INTERSTATES
  - US HIGHWAYS
  - PA HIGHWAYS
  - OTHER STATE ROADS
  - LOCAL ROADS
  - LIMESTONE GEOLOGY
  - EV STREAM WATERSHED
  - NWI WETLANDS
  - FLOODPLAINS
  - USGS LULC**
  - FORESTED AREAS**
  - Deciduous Forest
  - Evergreen Forest
  - Mixed Forest
  - Woody Wetlands
  - HIGH RECHARGE POTENTIAL (HSG "B" SOILS)

Data Sources:  
 Municipal Boundaries - PADOT  
 Watershed Boundaries - PADEP  
 Streams - Berk Co. Planning Commission  
 Roads - PADOT  
 Water Bodies-Derived from NWI Wetlands Data



FILE: \\gisserver\GIS\Projects\2532-NEMO\ArcMap\BASEMAP.mxd

